

Brand Book



WildPosh

Contents

3	Logo
7	Colours
9	Fonts
11	Templates
12	Visuals
16	Branding

—— Logo / horizontal use



To be used on dark backgrounds

To be used on light backgrounds



—— Logo / vertical use



To be used on dark backgrounds

To be used on light backgrounds





WildPosh



WildPosh

Funding Acknowledgment



**Co-funded by
the European Union**

Or



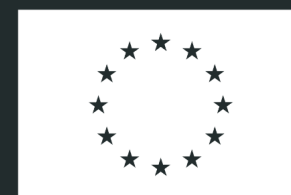
**Funded by
the European Union**

WILDPOSH receives funding from the European Union's Horizon Europe research and innovation programme under grant agreement No.101135238. Views and opinions expressed are those of the author(s) only and do not necessarily reflect those of the European Union (EU) or the European Research Executive Agency (REA). Neither the EU nor REA can be held responsible for them.



**Co-funded by
the European Union**

Or



**Funded by
the European Union**

WILDPOSH receives funding from the European Union's Horizon Europe research and innovation programme under grant agreement No.101135238. Views and opinions expressed are those of the author(s) only and do not necessarily reflect those of the European Union or the European Commission. Neither the EU nor the EC can be held responsible for them.

Detailed information [here](#)

To be used on dark backgrounds

To be used on light backgrounds

Please acknowledge funding by using the EU logo and one of the following funding sentences as shown below:

WILDPOSH receives funding from the European Union's Horizon Europe research and innovation programme under grant agreement No.101135238. Views and opinions expressed are those of the author(s) only and do not necessarily reflect those of the European Union (EU) or the European Research Executive Agency (REA). Neither the EU nor REA can be held responsible for them.



**Co-funded by
the European Union**



**Funded by
the European Union**



**Co-funded by
the European Union**



**Funded by
the European Union**

Font

Please always use the arial font for the funding statements.

EU emblem

Must always be on the left side or above the funding text.

Minimum size of the logo

The minimum height of the EU emblem must be 1 cm.

HEX
#E2B22D
CMYK
12, 29, 97, 0
RGB
226, 178, 45

HEX
#6DA2AA
CMYK
60, 23, 31, 0
RGB
109, 163, 170

HEX
#85A53D
CMYK
54, 19, 100, 2
RGB
133, 165, 61

HEX
#222C2D
CMYK
77, 63, 63, 65
RGB
34, 44, 45

HEX
#F2EEE7

CMYK
4, 4, 7, 0

RGB
242, 238, 231

HEX
#EAB1B1

CMYK
6, 35, 21, 0

RGB
234, 177, 177

HEX
#3E3A75

CMYK
90, 90, 25, 10

RGB
62, 58, 117

HEX
#1A5258

CMYK
90, 55, 55, 30

RGB
26, 82, 88

Aa

Comfortaa bold

Aa Bb Cc Dd Ee Ff Gg Hh Ii
Jj Kk Ll Mm Nn Oo Pp Qq
Rr Ss Tt Uu Vv Ww Xx Yy Zz

Comfortaa light

Aa Bb Cc Dd Ee Ff Gg Hh Ii
Jj Kk Ll Mm Nn Oo Pp Qq
Rr Ss Tt Uu Vv Ww Xx Yy Zz

For body texts

Aa

Roboto Bold

Aa Bb Cc Dd Ee Ff Gg Hh Ii Jj
Kk Ll Mm Nn Oo Pp Qq Rr Ss Tt
Uu Vv Ww Xx Yy Zz

Roboto light

Aa Bb Cc Dd Ee Ff Gg Hh Ii Jj Kk
Ll Mm Nn Oo Pp Qq Rr Ss Tt Uu
Vv Ww Xx Yy Zz

Aa

Montserrat regular

Aa Bb Cc Dd Ee Ff Gg Hh Ii
Jj Kk Ll Mm Nn Oo Pp Qq Rr
Ss Tt Uu Vv Ww Xx Yy Zz

Aa

Arial

Aa Bb Cc Dd Ee Ff Gg Hh Ii Jj
Kk Ll Mm Nn Oo Pp Qq Rr Ss
Tt Uu Vv Ww Xx Yy Zz

— Templates/ presentation

WildPosh



Title of presentation

Name of Presenter

Event / Location / Date


**Funded by
the European Union**

Views and opinions expressed are those of the author(s) only and do not necessarily reflect those of the European Union (EU) or the European Research Executive Agency (REA). Neither the EU nor REA can be held responsible for them.

3

Title of slide

- Body text



2

Section slide

Subtitle





8

Thank you!

wildposh.eu

 @WildPoshProject

 @wildposh-eu

 wildposhproject



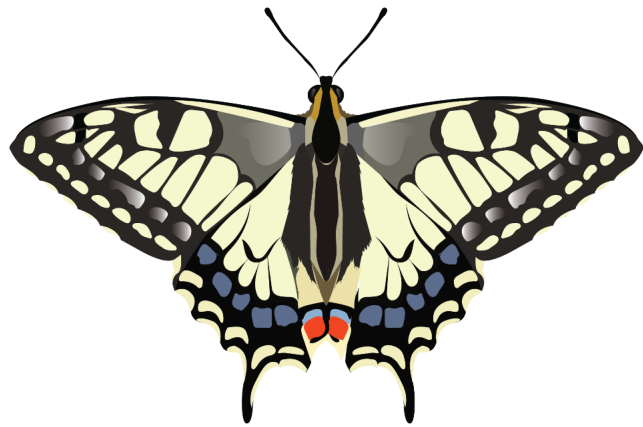


Visuals / backgrounds





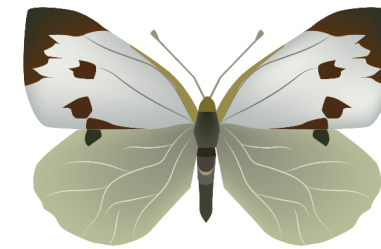
Visuals / sepcies illustrations



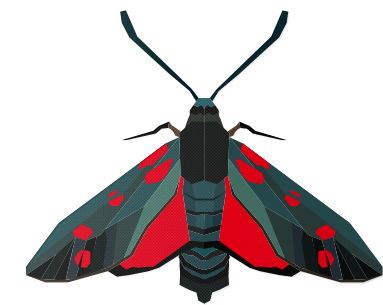
Papilio machaon



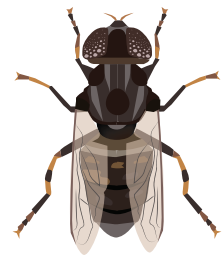
Macroglossum stellatarum



Pieris brassicae



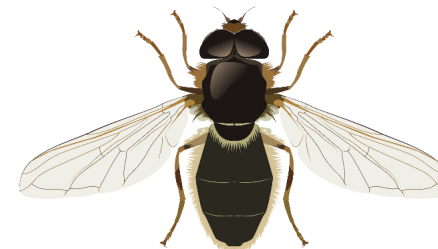
Zygaena filipendulae



Eristalinus aeneus



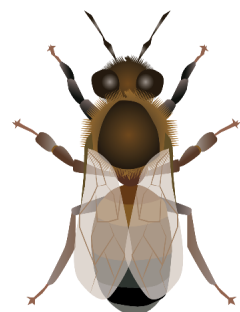
Myathropa florea



Cheilosia canicularis



Episyrrhus balteatus



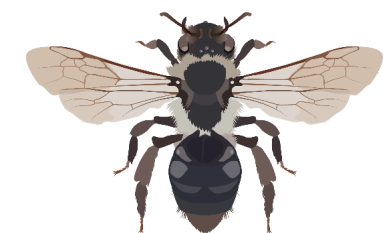
Anthophora plumipes



Colletes hederæ



Lasioglossum malachurum



Andrena vaga

Objectives



Determine the real-world agrochemical exposure profile of wild pollinators at landscape level, within and among sites



Characterise causal relationships between pesticides and pollinator health



Build open database on pollinator traits/ distribution and chemicals to define exposure and toxicity scenario



Propose new tools for risk assessment on wild pollinators

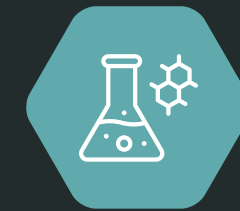


Drive policy and practice

Actions



Provide the first pan-European quantification of the exposure hazard of pesticides to representative wild pollinators while characterising their populations



Use integrated and controlled laboratory and semi-field experiments, determining how major categories of pesticide alone and in mixtures affect pollinator health



Develop databases on ecological traits and the spatial distribution of pollinators in relation to their potential exposure to pesticide, and on pesticide use and their toxicity



Propose integrated systems-based risk assessment tools for wild pollinators



Use innovation to meet the need for monitoring tools, novel screening protocols, and practice- and policy-relevant research outputs to local, national, European, and global stakeholders



WildPosh

PAN-EUROPEAN ASSESSMENT, MONITORING,
AND MITIGATION OF CHEMICAL STRESSORS
ON THE HEALTH OF WILD POLLINATORS

PROJECT SUMMARY

WildPosh is a multi-actor, transdisciplinary project whose overarching mission and ambition are to significantly improve the evaluation of the risk to wild pollinators of pesticide exposure, and enhance the sustainable health of pollinators and pollination services in Europe.

OBJECTIVES

Determine the real-world agrochemical exposure profile of wild pollinators at landscape level, within and among sites

Characterise causal relationships between pesticides and pollinator health

Build open database on pollinator traits/distribution and chemicals to define exposure and toxicity scenario

Propose new tools for risk assessment on wild pollinators

Drive policy and practice

ACTIONS

Provide the first pan-European quantification of the exposure hazard of pesticides to representative wild pollinators while characterising their populations

Use integrated and controlled laboratory and semi-field experiments, determining how major categories of pesticide alone and in mixtures affect pollinator health

Develop databases on ecological traits and the spatial distribution of pollinators in relation to their potential exposure to pesticide, and on pesticide use and their toxicity

Propose integrated systems-based risk assessment tools for wild pollinators

Use innovation to meet the need for monitoring tools, novel screening protocols, and practice- and policy-relevant research outputs to local, national, European, and global stakeholders

CONSORTIUM

17

Institutions

10

Countries

STRUCTURE

9

Work Packages

DURATION

4

Years, January 2024–December 2027

PROJECT COORDINATOR

Prof. Denis Michez
Head of the Laboratory of Zoology at the University of Mons, Belgium
Denis.MICHEZ@umons.ac.be

wildposh.eu

WildPosh Project

@WildPoshProject

@WildPoshProject

Funded by the European Union

Views and opinions expressed are those of the author(s) only and do not necessarily reflect those of the European Union (EU) or the European Research Executive Agency (REA). Neither the EU nor REA can be held responsible for them.

WildPosh

PAN-EUROPEAN ASSESSMENT, MONITORING,
AND MITIGATION OF CHEMICAL STRESSORS
ON THE HEALTH OF WILD POLLINATORS

PROJECT SUMMARY

WildPosh is a multi-actor, transdisciplinary project whose overarching mission and ambition are to significantly improve the evaluation of the risk to wild pollinators of pesticide exposure, and enhance the sustainable health of pollinators and pollination services in Europe.

OBJECTIVES

Determine the real-world agrochemical exposure profile of wild pollinators at landscape level, within and among sites

Characterise causal relationships between pesticides and pollinator health

Build open database on pollinator traits/distribution and chemicals to define exposure and toxicity scenario

Propose new tools for risk assessment on wild pollinators

Drive policy and practice

ACTIONS

Provide the first pan-European quantification of the exposure hazard of pesticides to representative wild pollinators while characterising their populations

Use integrated and controlled laboratory and semi-field experiments, determining how major categories of pesticide alone and in mixtures affect pollinator health

Develop databases on ecological traits and the spatial distribution of pollinators in relation to their potential exposure to pesticide, and on pesticide use and their toxicity

Propose integrated systems-based risk assessment tools for wild pollinators

Use innovation to meet the need for monitoring tools, novel screening protocols, and practice- and policy-relevant research outputs to local, national, European, and global stakeholders

CONSORTIUM

17

Institutions

10

Countries

STRUCTURE

9

Work Packages

DURATION

4

Years, January 2024–December 2027

PROJECT COORDINATOR

Prof. Denis Michez
Head of the Laboratory of Zoology at the University of Mons, Belgium
Denis.MICHEZ@umons.ac.be

wildposh.eu

WildPosh Project


@WildPoshProject

@WildPoshProject

Funded by the European Union


Views and opinions expressed are those of the author(s) only and do not necessarily reflect those of the European Union (EU) or the European Research Executive Agency (REA). Neither the EU nor REA can be held responsible for them.

Branding/ two pager



WildPosh

Pan-european assessment, monitoring, and mitigation of chemical stressors on the health of wild pollinators



PROJECT SUMMARY

WildPosh is a multi-actor, transdisciplinary project whose overarching mission and ambition are to significantly improve the evaluation of the risk to wild pollinators of pesticide exposure, and enhance the sustainable health of pollinators and pollination services in Europe.

OBJECTIVES

- Determine the real-world agrochemical exposure profile of wild pollinators at landscape level, within and among sites
- Characterise causal relationships between pesticides and pollinator health
- Build an open database on pollinator traits/distribution and chemicals to define exposure and toxicity scenario
- Propose new tools for risk assessment on wild pollinators
- Drive policy and practice

ACTIONS

- Provide the first pan-European quantification of the exposure hazard of pesticides to representative wild pollinators while characterising their populations
- Use integrated and controlled laboratory and semi-field experiments, determining how major categories of pesticide alone and in mixtures affect pollinator health
- Develop databases on ecological traits and the spatial distribution of pollinators in relation to their potential exposure to pesticide, and on pesticide use and their toxicity
- Propose integrated systems-based risk assessment tools for wild pollinators
- Use innovation to meet the need for monitoring tools, novel screening protocols, and practice- and policy-relevant research outputs to local, national, European, and global stakeholders

Funded by the European Union
Views and opinions expressed are those of the author(s) only and do not necessarily reflect those of the European Union (EU) or the European Research Executive Agency (REA). Neither the EU nor REA can be held responsible for them.

CONSORTIUM

17 Institutions 10 Countries

The consortium consists of 17 partners distributed in 10 European countries and has extensive experience in Research and Innovation projects under Horizon, as well as excellent knowledge of environmental chemistry, modelling, nutritional ecology, proteomics, ecotoxicology and environmental policy.

DURATION

4 Years, January 2024–December 2027

STRUCTURE

- WP1 Monitoring scheme to determine sources and routes of pesticide exposure in environmental compartments/mixtures
- WP2 Effects of exposure to single pesticides single exposure and their mixtures on wild pollinators as novel models in laboratory and semi-field experiments
- WP3 Omics of pesticide responses in pollinators
- WP4 Data curation and in silico modelling for risk assessment
- WP5 Integrated systems-based risk assessment
- WP6 Assessing the effectiveness and feasibility of mitigation measures
- WP7 Communication, knowledge exchange and impact
- WP8 Project Management and Scientific Coordination

PARTNERS

- University of Mons
- Pensoft Publishers
- Eesti Maaülikool, Estonian University of Life Sciences
- BioPark Archamps
- French National Agency for Food, Environmental and Occupational Health & Safety
- French National Centre for Scientific Research
- Martin Luther University Halle-Wittenburg
- Albert Ludwigs University Freiburg
- UFZ Helmholtz Centre for Environmental Research
- University of Turin
- Italian National Institute of Health
- National Veterinary Research Institute - State Research Institute
- University of Novi Sad Faculty of Sciences
- University of Novi Sad, Bioser Institute for Information Technologies
- University of Murcia
- Royal Holloway and Bedford New College
- The University of Reading

PROJECT COORDINATOR

Prof. Denis Michez
Head of the Laboratory of Zoology at the University of Mons, Belgium
Denis.MICHEZ@umons.ac.be

Funded by the European Union
Views and opinions expressed are those of the author(s) only and do not necessarily reflect those of the European Union (EU) or the European Research Executive Agency (REA). Neither the EU nor REA can be held responsible for them.

wildposh.eu
@WildPoshProject



WildPosh

Pan-european assessment, monitoring, and mitigation of chemical stressors on the health of wild pollinators



PROJECT SUMMARY

WildPosh is a multi-actor, transdisciplinary project whose overarching mission and ambition are to significantly improve the evaluation of the risk to wild pollinators of pesticide exposure, and enhance the sustainable health of pollinators and pollination services in Europe.

OBJECTIVES

- Determine the real-world agrochemical exposure profile of wild pollinators at landscape level, within and among sites
- Characterise causal relationships between pesticides and pollinator health
- Build an open database on pollinator traits/distribution and chemicals to define exposure and toxicity scenario
- Propose new tools for risk assessment on wild pollinators
- Drive policy and practice

ACTIONS

- Provide the first pan-European quantification of the exposure hazard of pesticides to representative wild pollinators while characterising their populations
- Use integrated and controlled laboratory and semi-field experiments, determining how major categories of pesticide alone and in mixtures affect pollinator health
- Develop databases on ecological traits and the spatial distribution of pollinators in relation to their potential exposure to pesticide, and on pesticide use and their toxicity
- Propose integrated systems-based risk assessment tools for wild pollinators
- Use innovation to meet the need for monitoring tools, novel screening protocols, and practice- and policy-relevant research outputs to local, national, European, and global stakeholders

Funded by the European Union
Views and opinions expressed are those of the author(s) only and do not necessarily reflect those of the European Union (EU) or the European Research Executive Agency (REA). Neither the EU nor REA can be held responsible for them.

wildposh.eu
@WildPoshProject

Branding/ website

